

2015

MY2015 Internal Geared Hub
SRAM[®]

(english) **spare parts catalog**

SRAM® ORIGINAL PARTS

CAUTION:

The SRAM Warranty policy does not cover damages caused by the use of non-SRAM parts.

Use only SRAM parts with SRAM components.

Installation of parts and accessories not originally intended could result in less than optimal performance and/or injury.

For in-depth service information on SRAM products, refer to our website at www.sram.com/service. Contact your local SRAM distributor or dealer for ordering information.

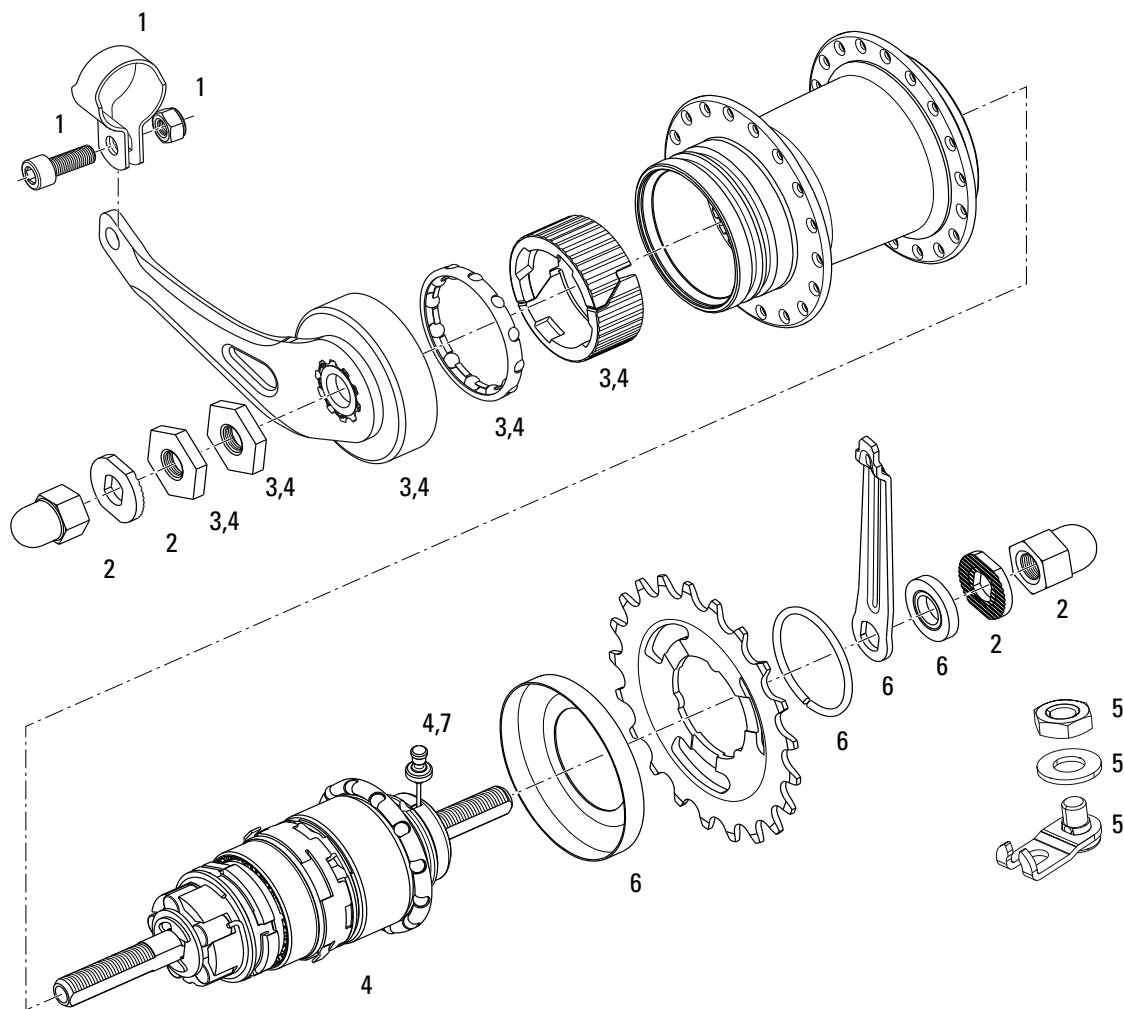
Information contained in this publication is subject to change at any time without prior notice. Your product's appearance may vary from the diagrams contained in this catalog.

TABLE OF CONTENTS



SRAM

i-MOTION 3	5	i-MOTION 3 · Coaster Brake Version
	6	i-MOTION 3 · Freewheel Version
	7	i-MOTION 3 · Disc Brake Version
	8	i-MOTION 3 · Roller Brake Version
AUTOMATIX	9	AUTOMATIX · Coaster Brake Version
	10	AUTOMATIX · Freewheel Version
DualDrive 3	11	DualDrive 3 · Freewheel Version
	12	DualDrive 3 · Disc Brake Version
G8/G9	13	G8/G9 · Coaster Brake/Freewheel/ Disc Brake
	14	Sprockets
D-SERIES	15	i-Light/Dynamo
	16	i-Motion 9/Spectro 7/P-5/Torpedo 3/ DualDrive 1 & 2
	17	Tools and Grease
	18	Retaining Washers · G8/G9



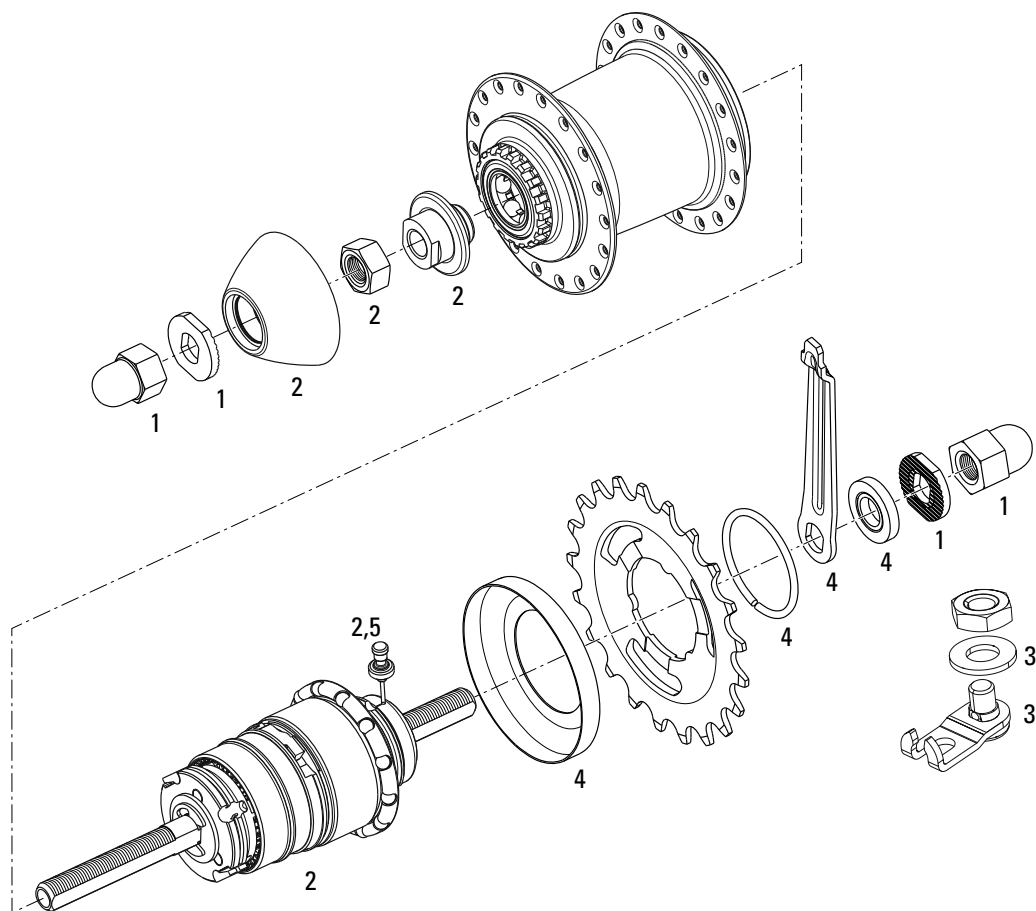
NOTES:

1. Sprockets see page 14

2. Grease and Tools see page 17

No. Part Number Description

1	11.2018.007.000	Brake arm clip i-MOTION 3 / AUTOMATIX - Ø 20 mm
1	11.2018.007.001	Brake arm clip i-MOTION 3 / AUTOMATIX - Ø 22 mm
2	11.2018.006.000	Cap Nuts / Washers i-MOTION 3 / AUTOMATIX
3	11.2018.004.000	Maintenance Kit i-MOTION 3 / AUTOMATIX - Coaster Brake
4	11.2018.002.000	Exchange Kit i-MOTION 3 - Coaster Brake (comes as a complete hub)
5	11.3115.020.000	Shifter Connector Strap, i3 Hub qty 1
6	11.2018.005.000	Spare Parts i-MOTION 3
NS	00.2215.006.000	i-3 shifter 1600 w connector Silver
NS	00.2215.007.000	i-3 shifter 1700 w connector Silver
7	11.3118.008.000	Gear Shift Cable i-Motion 3

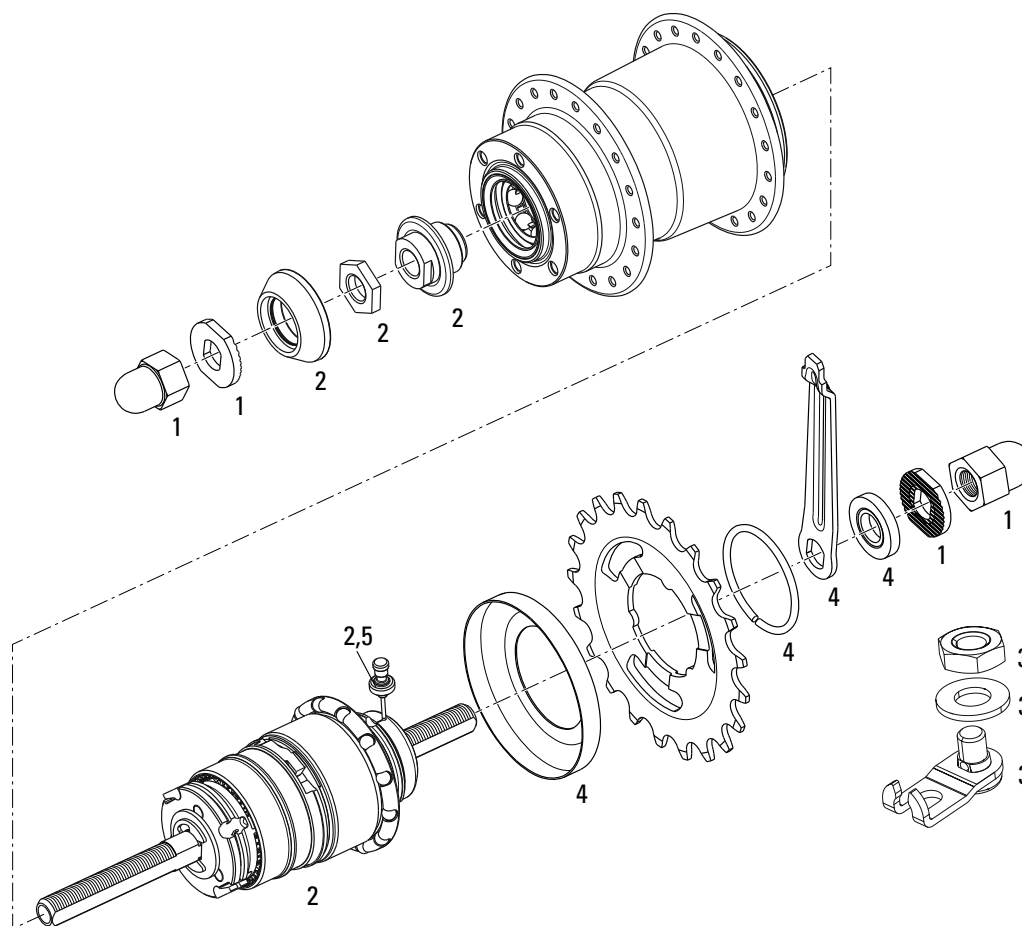


NOTES:

1. Sprockets see page 14

2. Grease and Tools see page 17

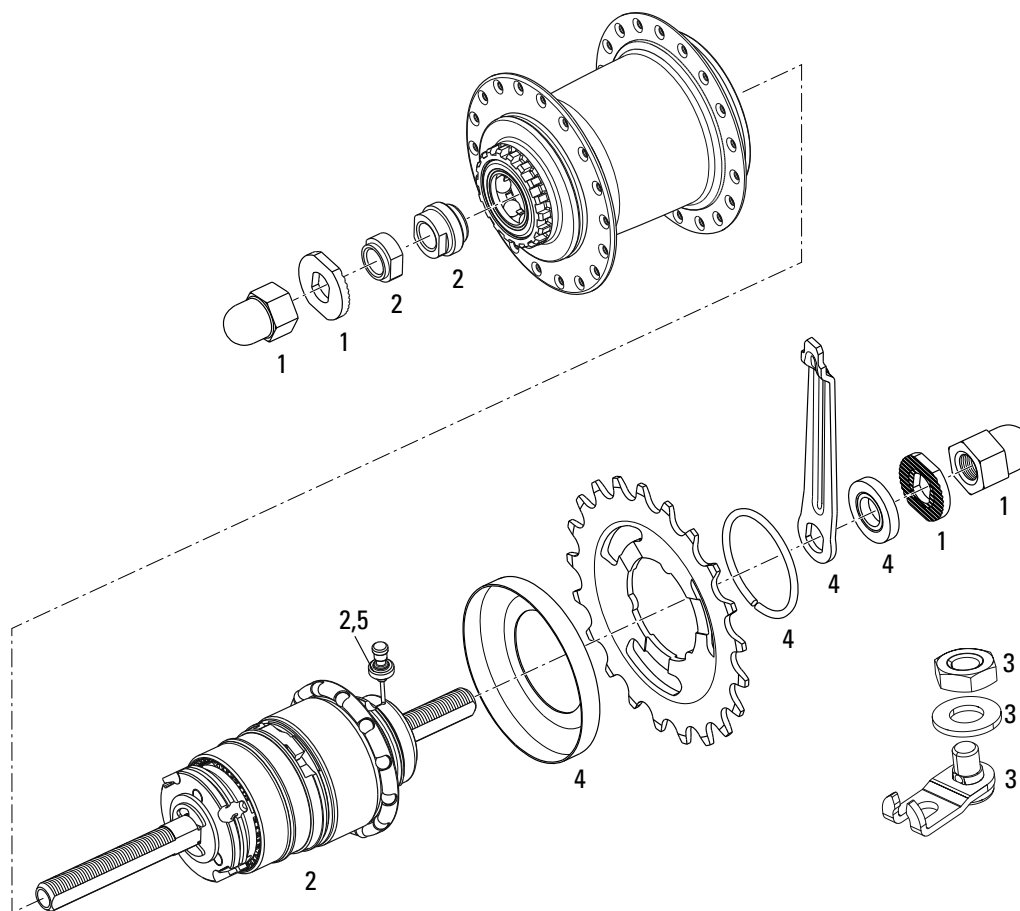
No.	Part Number	Description
1	11.2018.006.000	Cap Nuts / Washers i-MOTION 3 / AUTOMATIX
2	11.2018.002.002	Exchange kit for i-Motion 3 Freewheel 178mm
3	11.3115.020.000	Shifter Connector Strap, i3 Hub qty 1
4	11.2018.005.000	Spare Parts i-MOTION 3
NS	00.2215.006.000	i-3 shifter 1600 w connector Silver
NS	00.2215.007.000	i-3 shifter 1700 w connector Silver
5	11.3118.008.000	Gear Shift Cable i-Motion 3



NOTES:

- 1. Sprockets see page 14
- 2. Grease and Tools see page 17

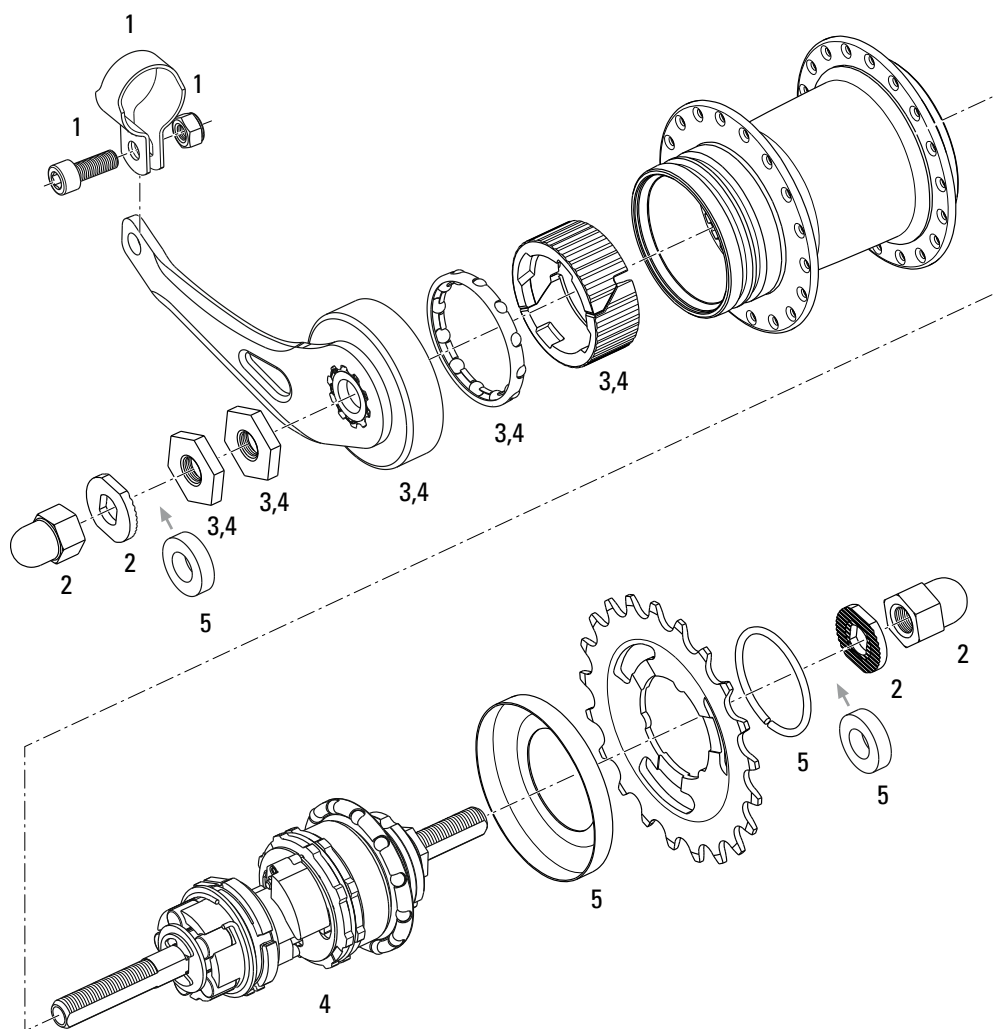
No.	Part Number	Description
1	11.2018.006.000	Cap Nuts / Washers i-MOTION 3 / AUTOMATIX
2	11.2018.002.001	Exchange kit for i-Motion Disc Brake, Roller Brake 178mm
3	11.3115.020.000	Shifter Connector Strap, i3 Hub qty 1
4	11.2018.005.000	Spare Parts i-MOTION 3
NS	00.2215.006.000	i-3 shifter 1600 w connector Silver
NS	00.2215.007.000	i-3 shifter 1700 w connector Silver
5	11.3118.008.000	Gear Shift Cable i-Motion 3



NOTES:

1. Sprockets see page 14
 2. Grease and Tools see page 17

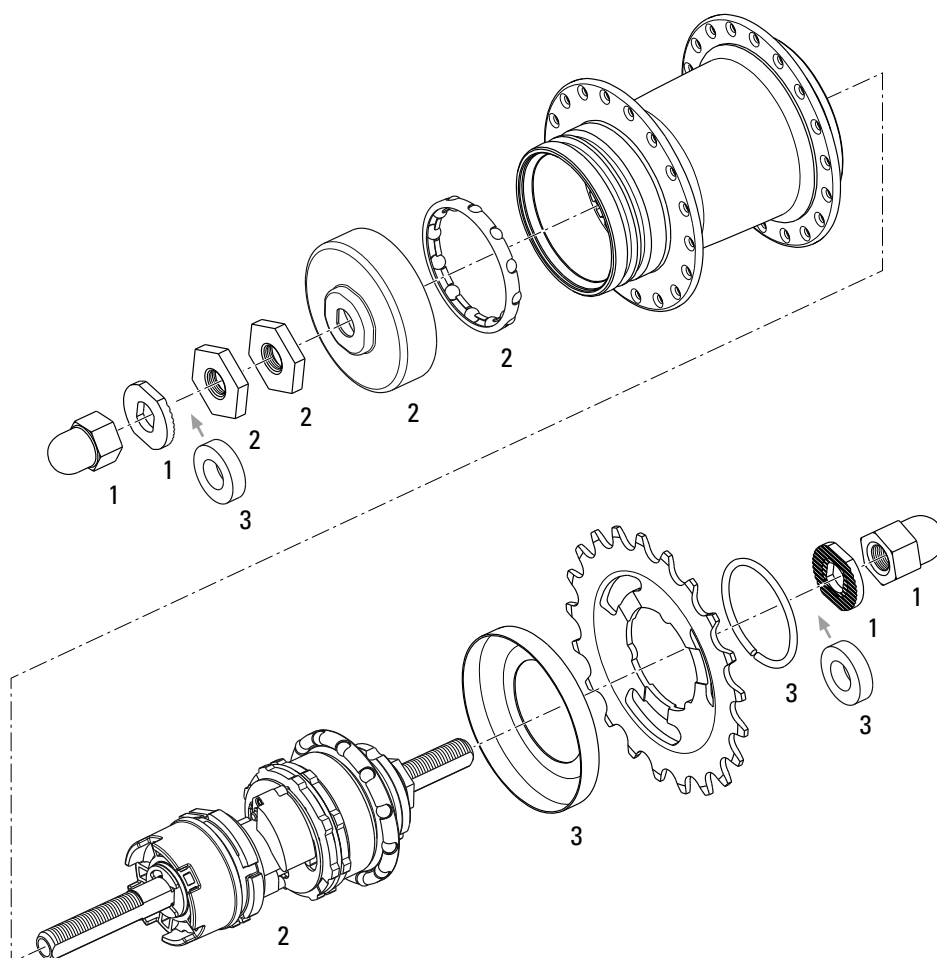
No.	Part Number	Description
1	11.2018.006.000	Cap Nuts / Washers i-MOTION 3 / AUTOMATIX
2	11.2018.002.001	Exchange kit for i-Motion Disc Brake, Roller Brake 178mm
3	11.3115.020.000	Shifter Connector Strap, i3 Hub qty 1
4	11.2018.005.000	Spare Parts i-MOTION 3
NS	00.2215.006.000	i-3 shifter 1600 w connector Silver
NS	00.2215.007.000	i-3 shifter 1700 w connector Silver
5	11.3118.008.000	Gear Shift Cable i-Motion 3


NOTES:

- 1. Sprockets see page 14
- 2. Grease and Tools see page 17

No. Part Number Description

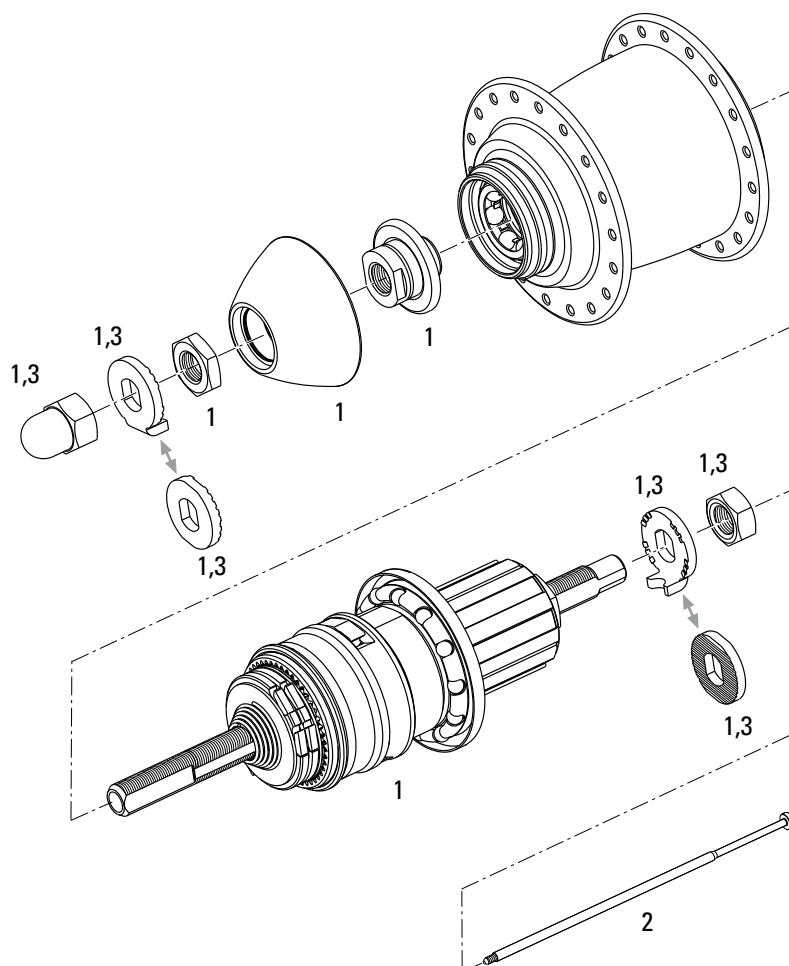
1	11.2018.007.000	Brake arm clip i-MOTION 3 / AUTOMATIX - Ø 20 mm
1	11.2018.007.001	Brake arm clip i-MOTION 3 / AUTOMATIX - Ø 22 mm
2	11.2018.006.000	Cap Nuts / Washers i-MOTION 3 / AUTOMATIX
3	11.2018.004.000	Maintenance Kit i-MOTION 3 / AUTOMATIX - Coaster Brake
4	11.2018.003.000	Exchange Kit AUTOMATIX - Coaster Brake (comes as a complete hub)
5	11.2018.008.000	Spare Parts AUTOMATIX



NOTES:

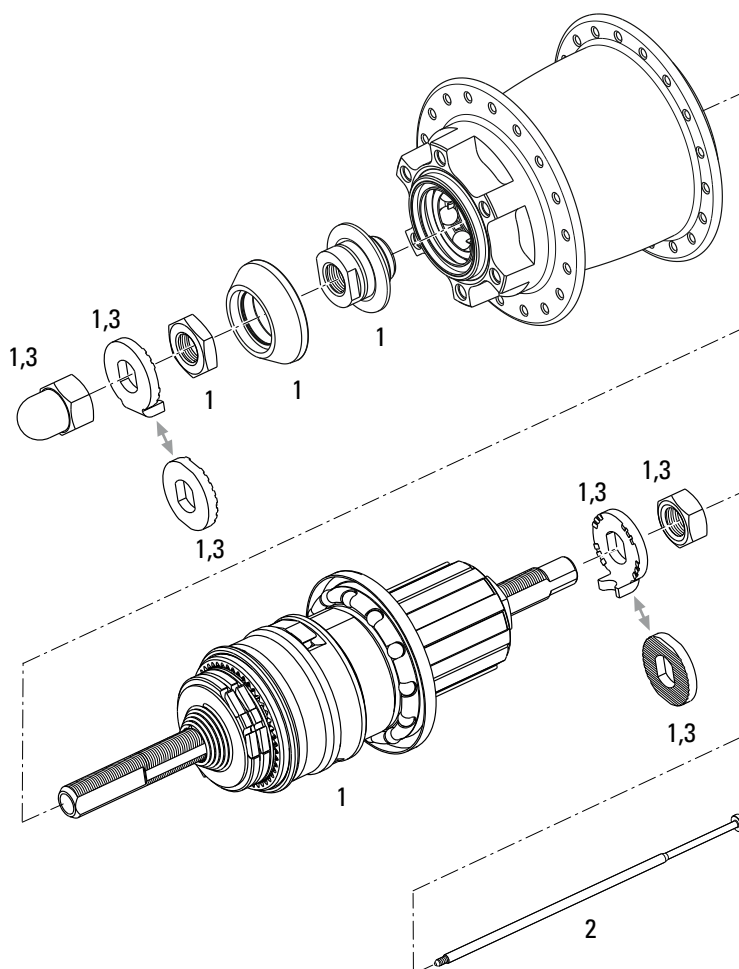
- 1. Sprockets see page 14
- 2. Grease and Tools see page 17

No.	Part Number	Description
1	11.2018.006.000	Cap Nuts / Washers i-MOTION 3 / AUTOMATIX
2	11.2018.003.001	Exchange Kit AUTOMATIX (comes as a complete hub)
3	11.2018.008.000	Spare Parts AUTOMATIX

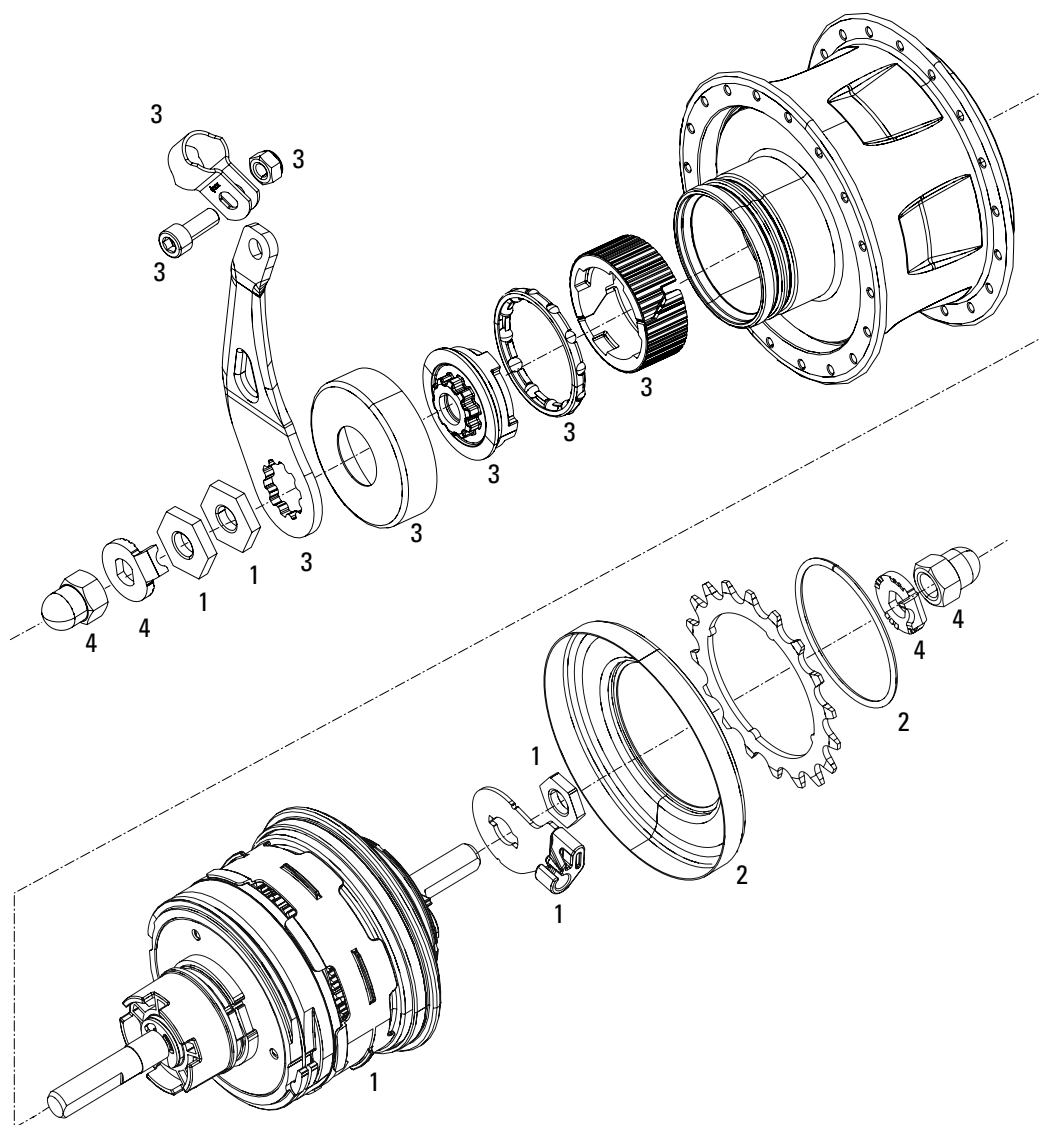


No.	Part Number	Description
-----	-------------	-------------

1	11.3118.004.000	Exchange Kit Dual Drive 3 Freewheel
1	11.3118.004.001	Exchange Kit Dual Drive 3 Freewheel XL
2	11.3118.005.000	Shifting Pin Dual Drive
2	11.3118.005.001	Shifting Pin Dual Drive XL
2	11.3118.007.000	Threaded Pin Dual Drive 3 XL
3	11.3118.006.002	Capnut and Retaining Washer Dual Drive 3
3	11.3118.006.003	Capnut and Retaining Washer Dual Drive 3 XL
NS	00.2218.003.000	DualDrive3 Trigger Front Black without clickbox Via Centro Rear 10speed Shifter Match


No. Part Number Description

1	11.3118.004.002	Exchange Kit Dual Drive 3 XL
1	11.3118.004.003	Exchange Kit Dual Drive 3 Disc Brake XL
2	11.3118.005.000	Shifting Pin Dual Drive
2	11.3118.005.001	Shifting Pin Dual Drive XL
2	11.3118.007.000	Threaded Pin Dual Drive 3 XL
3	11.3118.006.002	Capnut and Retaining Washer Dual Drive 3
3	11.3118.006.003	Capnut and Retaining Washer Dual Drive 3 XL
NS	00.2218.003.000	DualDrive3 Trigger Front Black without clickbox Via Centro Rear 10speed Shifter Match



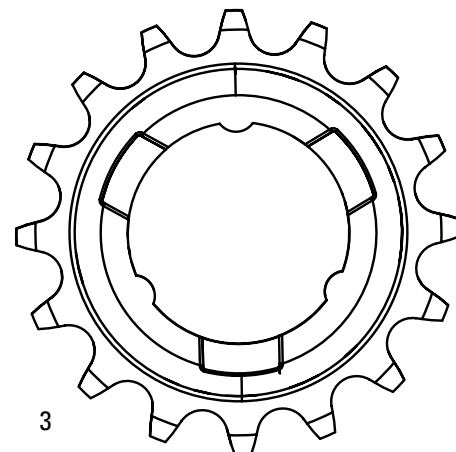
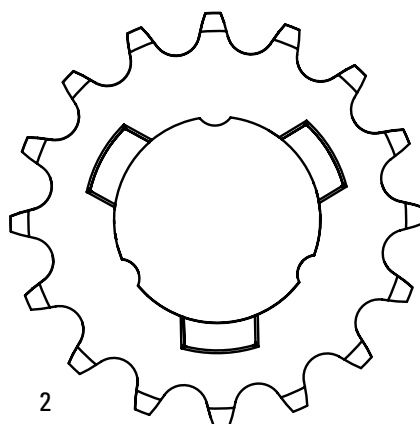
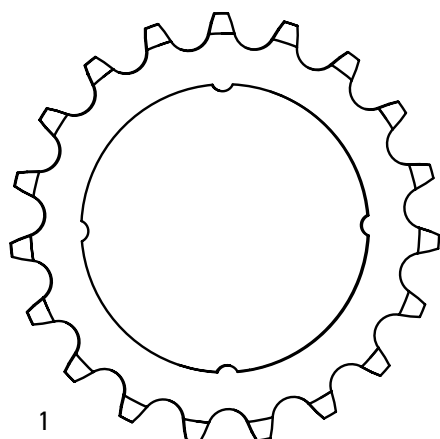
NOTES:

1. Sprockets see page 14

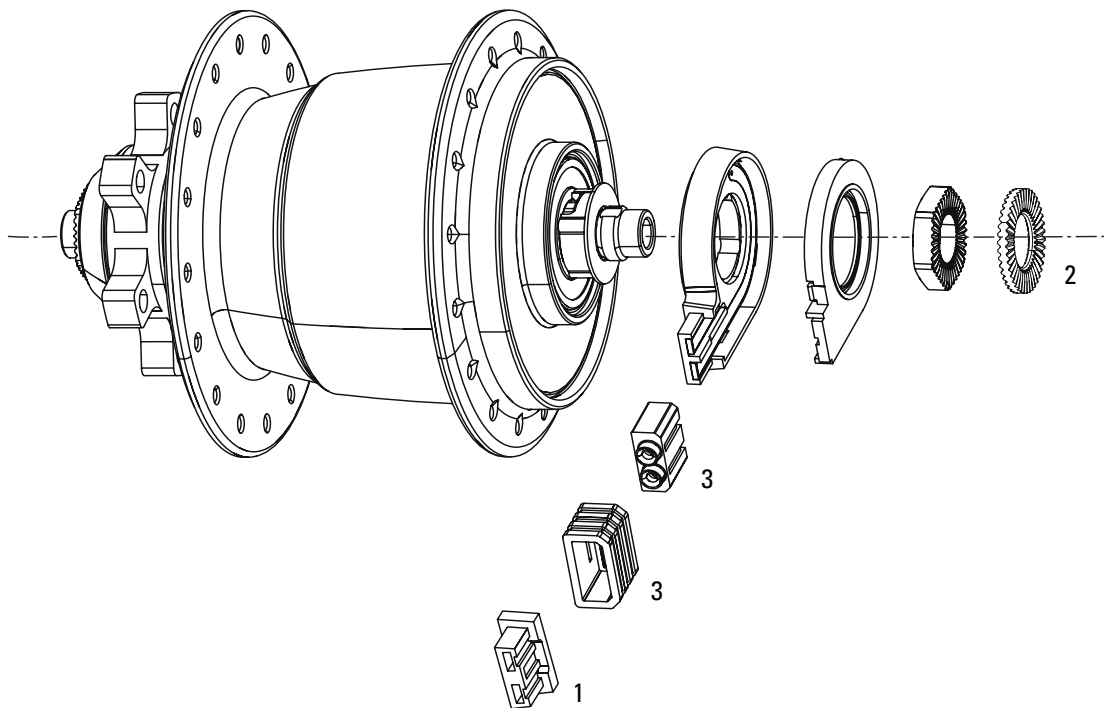
2. Grease and Tools see page 17

No.	Part Number	Description
1	11.3118.003.000	Exchange Kit G8 Coaster Brake
1	11.3118.003.001	Exchange Kit G8 Disc Brake
1	11.3118.003.002	Exchange Kit G8 Disc Brake Belt Drive
1	11.3118.003.003	Exchange Kit G8 Freewheel
1	11.3118.003.004	Exchange Kit G8 Freewheel Belt Drive
2	11.3118.001.000	Spare Parts for G8/G9
3	11.3118.002.000	Maintenance Kit G8/G9 Coaster Brake
3	11.3118.002.001	Maintenance Kit G8/G9 Coaster Brake Belt Drive
4	11.3118.000.000	Capnut and Retaining Washer 60deg G8/G9
4	11.3118.000.001	Capnut and Retaining Washer 75deg G8/G9
4	11.3118.000.002	Capnut and Retaining Washer 85deg G8/G9
4	11.3118.000.003	Capnut and Retaining Washer 15deg G8/G9
4	11.3118.000.004	Capnut and Retaining Washer 0deg G8/G9
4	11.3118.000.005	Capnut and Retaining Washer 90deg G8/G9
NS	00.2218.004.000	G8 Twister Shifter Black 2000mm Closed Housing
NS	00.2218.008.000	G9 Trigger Shifter Black 2000mm Closed Housing

SPROCKETS



No.	Part Number	Description
1	11.3318.000.000	G8 Sprocket 18t Straight
1	11.3318.000.001	G8 Sprocket 19t Straight
1	11.3318.000.002	G8 Sprocket 20t Straight
1	11.3318.000.003	G8 Sprocket 21t Straight
1	11.3318.000.004	G8 Sprocket 22t Straight
2	11.2018.009.000	Sprocket 16T straight standard
2	11.2018.009.001	Sprocket 17T straight standard
2	11.2018.009.002	Sprocket 18T straight standard
3	11.2018.009.003	Sprocket 16T offset standard
3	11.2018.009.004	Sprocket 17T offset standard
3	11.2018.009.005	Sprocket 18T offset standard
3	11.2018.009.006	Sprocket 19T offset standard
3	11.2018.009.007	Sprocket 20T offset standard
3	11.2018.009.008	Sprocket 21T offset standard
3	11.2018.009.009	Sprocket 22T offset standard
3	11.2018.009.010	Sprocket 24T offset standard

**No. Part Number Description**

1	11.3115.017.000	iLight Connector, i-Light - Hub dynamo qty 1
2	11.2015.001.000	Washer (20mm x 10.2mm x 2.2mm), i-Light, Qty 1
3	11.2015.015.000	iLight Connector, as of MY 08

i-MOTION 9/SPECTRO 7/P-5/ TORPEDO 3/ DUAL DRIVE 1 & 2 - SPARE PARTS KITS

Part Number Description

i-Motion 9

00.2215.004.000	i-9 shifter w connector 1600 Silver
00.2215.005.000	i-9 shifter w connector 1700 Silver
11.2215.000.000	Grip Nut/Screw i-Motion 9, Qty 2
11.2215.001.000	Grip Lens i-Motion 9, Qty 1
11.2215.003.000	Grip i-Motion 9, Qty 1

S7 & P5

00.2215.019.000	S7 twist shifter 1700mm w Mini Clickbox & grips
00.2215.019.010	S7 twist shifter 1800mm w Mini Clickbox & grips
11.3115.023.000	S7 Twist Shifter w/o Cable Housing qty 1
11.3115.037.000	Clickbox, S7 w/accessories (from MY03) qty 1
11.2215.006.000	Cable Change Cover S7 P5 SL 10 PCS
11.3115.025.000	Barrel adjuster Sparc, S7, P5 qty 1
11.3115.027.000	Fixing Bolt for Clickbox Sparc, S7, P5, qty 1
11.3115.040.000	Clamping Bolt IGH Shifter Sparc, S7, PR, qty 1
11.3115.042.000	Cover/Screw, S7 IGH shifter, Sparc, P5 qty 1
11.3115.027.000	Fixing Bolt for Clickbox Sparc, S7, P5, qty 1
11.3115.031.000	Fixed Grip, Right, 71mm (P5/S7), qty 1
11.3115.022.000	Cable Housing S7 IGH shifter, 2300mm Dual Drive, Sparc, P5,qty 5
00.2215.020.000	P5 twist shifter 1700mm w Mini Clickbox & grips
00.2215.020.020	P5 twist shifter 1800mm w Mini Clickbox & grips
11.3115.024.000	P5 Twist Shifter with Cable Housing qty 1
11.3115.038.000	Clickbox, P5 w/accessories (from MY03) qty 1

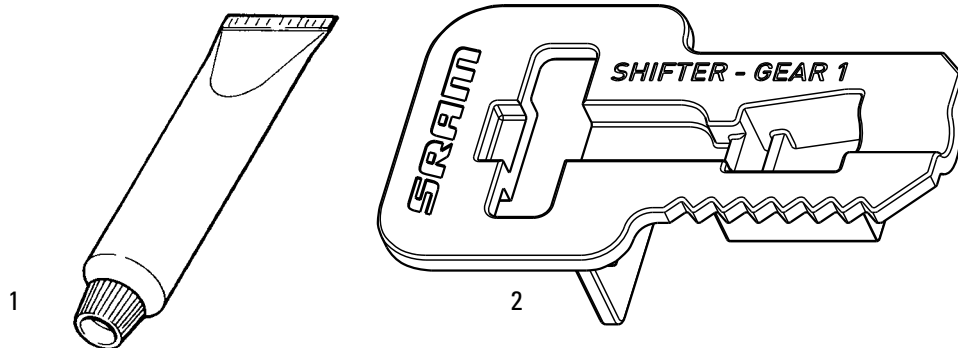
Torpedo 3

00.2215.024.000	T3 twist shifter stainless cable 2200mm no grips
00.0000.200.686	T3 BANDIX shifter stainless cable 2142mm no grips
00.2215.024.000	T3 twist shifter stainless cable 2200mm no grips

Dual Drive 1 & 2

11.3115.026.000	Cover Dual Drive qty 1
11.3115.032.000	Cover 7 / 8 Speed Dual Drive, qty 1
11.3115.033.000	Button 24 Speed till model 03 / 21 Speed as from model 04 Dual Drive, qty 1
11.2215.007.000	DD Shift Button
11.3115.000.000	Adjuster Nut Indexed, Dual Drive/iBrake, qty 2
11.3118.005.000	Shifting Pin Dual Drive
11.3118.005.001	Shifting Pin Dual Drive XL
11.7915.001.000	DualDrive Grip, Twist, 8/9spd, Qty 1
00.0000.200.062	DualDrive Clickbox
00.0000.200.067	DualDrive Shifter 27-speed w/o clickbox
00.0000.200.068	DualDrive Shifter 24-speed w/o clickbox
00.7015.047.000	DualDrive Trigger 9-speed rear (right)
00.7015.047.010	DualDrive Trigger 8-speed rear (right)
00.7015.047.020	DualDrive Trigger index front (left) w/o clickbox

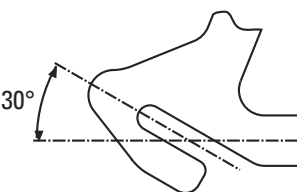
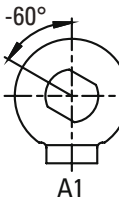
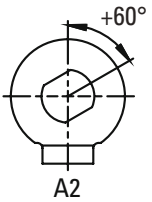
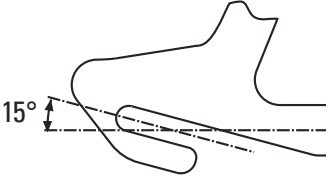
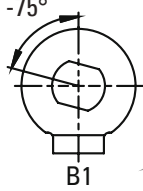
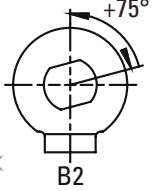
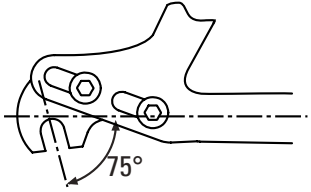

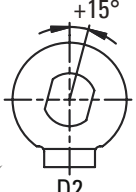
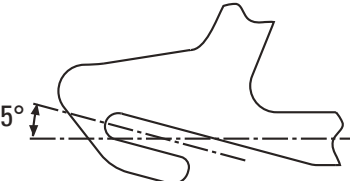
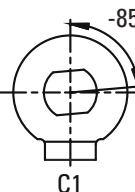
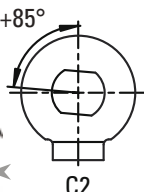
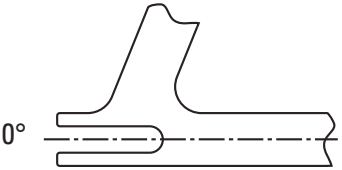
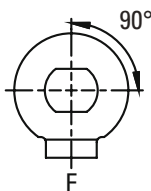
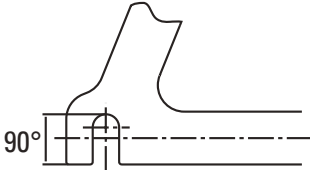
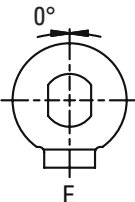
TOOLS AND GREASE FOR INTERNAL GEAR HUBS



No.	Part Number	Description
-----	-------------	-------------

1	11.3318.001.000	SRAM Internal Gear Hub Grease Tribopaste 10g
2	11.7918.000.000	Mounting Tool Shift Cable I.Motion 3

RETAINING WASHERS · G8/G9

Dropout Style	Angle	Non-Drive Side	Drive Side	Spare Part Kit Number
	30°			Capnut and Retaining Washer 60deg G8/G9 11.3118.000.000
	15°			Capnut and Retaining Washer 75deg G8/G9 11.3118.000.001
	75°			Capnut and Retaining Washer 15deg G8/G9 11.3118.000.003
	5°			Capnut and Retaining Washer 85deg G8/G9 11.3118.000.002
	0°			Capnut and Retaining Washer 0deg G8/G9 11.3118.000.004
	90°			Capnut and Retaining Washer 90deg G8/G9 11.3118.000.005

COPYRIGHT

This publication includes trademarks and registered trademarks of SRAM LLC designated by the symbols [™] and ®, respectively.

Copyright © 2014 SRAM LLC

www.sram.com

world headquarters

SRAM LLC

**1333 n. kingsbury st., 4th fl
chicago, il 60622
phone +1-312-664-8800
fax +1-312-664-8826**

european headquarters

SRAM europe

**passbosweg 14 - 16
3862 ZS nijkerk
the netherlands
phone +31-33-450-6060
fax +31-33-457-0200**

asian headquarters

SRAM taiwan

**no. 1598-8 chung shan rd
shen kang hsiang, taichung
county 429 taiwan r.o.c.
phone +886-4-2561-3678
fax +886-4-2561-3686**