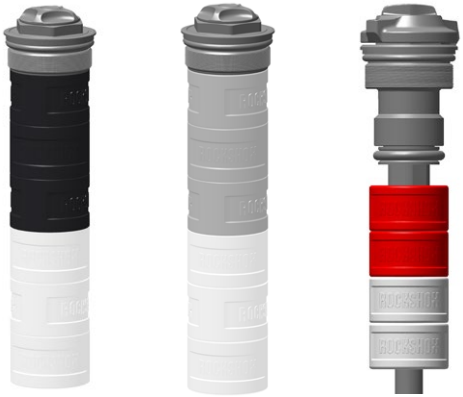




Bottomless Tokens™ 2018



	Factory installed	Installation en usine	Instalado de fábrica
	Ab Werk installiert	Installato in fabbrica	工場出荷時取り付け済み
	Instalado de fábrica	In de fabriek geïnstalleerd	出厂安装
	Available	Disponibile	Disponível
	Erhältlich	Disponibile	追加可能分
	Disponibile	Beschikbaar	可提供

	32 mm Solo Air™
	35 mm Solo Air / DebonAir™
	35 mm Dual Position Air™
	Available
B	Boost
DPA	Dual Position Air

Bluto™			
	80 mm	100 mm	120 mm
26"			

BOXXER®

	200 mm
26" 27.5"	

Lyrrik™ DebonAir

	150 mm	160 mm	170 mm	180 mm		150 mm	160 mm	170 mm	180 mm
27.5"B					29"B				

Lyrrik DPA

	150 mm	160 mm	170 mm	180 mm		160 mm	170 mm	180 mm
27.5"B					29"B			

PIKE® DebonAir

	120 mm	130 mm	140 mm	150 mm	160 mm		120 mm	130 mm	140 mm
27.5"B						29"B			

PIKE DJ™

	100 mm	110 mm	140 mm
26"			

PIKE DPA

	150 mm	160 mm		140 mm
27.5"B			29"B	

REBA®

	100 mm	120 mm	130 mm	140 mm	150 mm		80 mm	100 mm	120 mm	130 mm	140 mm	150 mm
27.5" 27.5"B						29" 29"B						
	3 Max	3 Max	3 Max	3 Max	3 Max		3 Max	3 Max	3 Max	3 Max	3 Max	3 Max

Revelation

	120 mm	130 mm	140 mm	150 mm	160 mm		120 mm	130 mm	140 mm
27.5"B						29"B			
	6 Max	5 Max	5 Max	4 Max	4 Max		6 Max	5 Max	5 Max

RS-1™

	80 mm	90 mm	100 mm	110 mm	120 mm
26" 27.5" 29"					
	3 Max	3 Max	3 Max	3 Max	3 Max

SID®

	80 mm	100 mm
27.5" 27.5"B 29" 29"B		
	3 Max	3 Max

Yari™ DPA

	150 mm	160 mm	170 mm	180 mm
27.5"B 29"B				
	6 Max	5 Max	5 Max	4 Max

Yari DebonAir™

	150 mm	160 mm	170 mm	180 mm		150 mm	160 mm	170 mm	180 mm
27.5"B					29"B				
	5 Max	5 Max	4 Max	4 Max		5 Max	5 Max	4 Max	4 Max

For Bottomless Token™ installation instructions, find your fork's service manual at www.sram.com/service.

Anweisungen zum Einbau der Bottomless Token finden Sie in der Wartungsanleitung für Ihre Gabel unter www.sram.com/service.

Para obtener instrucciones de instalación de los elementos Bottomless Token, localice el manual de mantenimiento de su horquilla en www.sram.com/service.

Pour obtenir les consignes d'installation des Bottomless Token, consultez le manuel d'entretien de votre fourche sur le site www.sram.com/service.

Per le istruzioni di installazione del Bottomless Token, il manuale di manutenzione delle forcelle è reperibile all'indirizzo www.sram.com/service.

Voor de installatie-instructies van de Bottomless Token raadpleeg de onderhoudshandleiding van uw vork op www.sram.com/service.

Para obter instruções de instalação do Bottomless Token, consulte o seu manual de serviço do garfo em www.sram.com/service.

Bottomless Token の取り付け方法については、www.sram.com/serviceに掲載されているお使いのフォークのサービス・マニュアルを参照してください。

请参阅 www.sram.com/service 上的前叉保养手册，了解Bottomless Token (无底垫圈) 的安装说明。