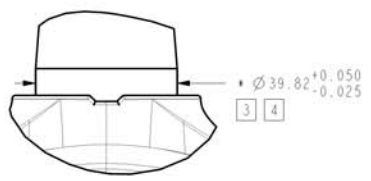
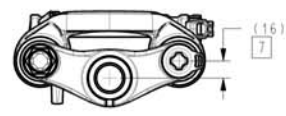
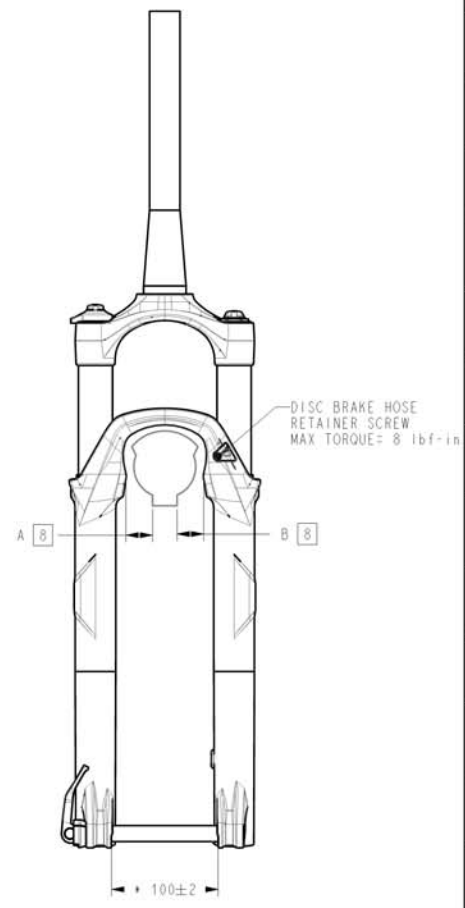
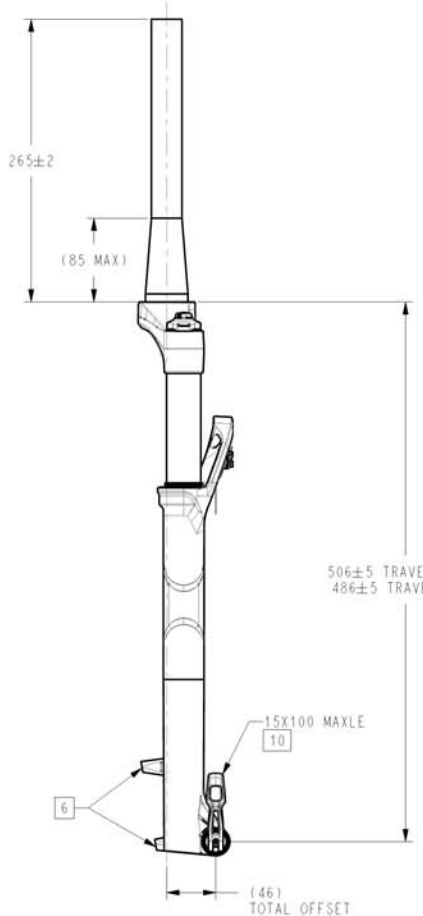
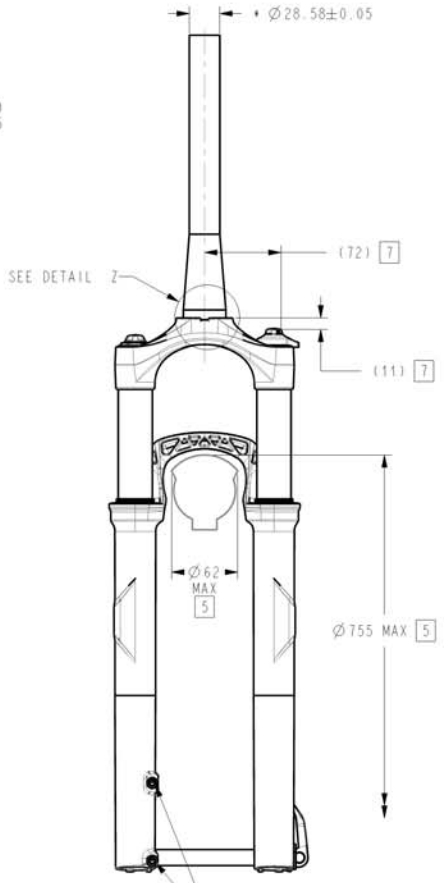


REV	REVISION RECORD
A	RELEASE



DETAIL Z
SCALE 1:1



NOTES (UNLESS OTHERWISE SPECIFIED):

- SRAM RESERVES THE RIGHT TO CHANGE SPECIFICATIONS WITHOUT PRIOR NOTICE. USE LATEST REVISION.
- REFERENCE DIMENSIONS NOTED WITH "()" ARE FOR CUSTOMER DESIGN INFORMATION ONLY.
- CROWN RACE Ø'S MEASURED AS AVERAGE OF 3 DIAMETRIC POINTS MINIMUM.
- HEADSET CUP ID MUST BE GREATER THAN STEER TUBE OD +0.3MM MIN
- IMPORTANT: CUSTOMER IS RESPONSIBLE FOR ENSURING MINIMUM TIRE CLEARANCE. DO NOT EXCEED MAXIMUM TIRE ENVELOPE INDICATED ON THIS DRAWING.
- POST TYPE BRAKE CALIPER MOUNT, DIRECT FOR 160MM ROTOR DIA, MAX ROTOR DIA = 215MM.
- ESTIMATED WORST CASE FRAME CLEARANCE. NOTE THAT POINT IS DEFINED IN 3 DIMENSIONS
- WHEEL CENTER TOLERANCE: |A-B| < 2MM
- DISHED WHEEL OR GAGE MUST BE CLAMPED IN DROPOUTS. 3D REPRESENTATION FILES (.IGS AND .STP) AVAILABLE UPON REQUEST.
- IMPORTANT CUSTOMER IS RESPONSIBLE FOR ENSURING THAT ROCKSHOX MAXLE SYSTEM IS USED PER SRAM'S OPERATING INSTRUCTIONS

M6X1-6H ±14 MIN
BRAKE CALIPER BOLT RECOMMENDED
FULL THREAD ENGAGEMENT = 9-12mm
MAX TORQUE = 90 lbf-in (10.2 N-m)

DESIGNED BY: J. BALTES	FORMAT: A2	SCALE: 1:5	SHEET: 1 / 1
------------------------	------------	------------	--------------

ALL DIMENSIONS ARE IN mm	GEOMETRIC DIMENSIONING AND TOLERANCING TO BE INTERPRETED PER ANSI Y14.5M 1994
THIRD ANGLE PROJECTION	* INDICATES THE DIMENSION IS CRITICAL TO THE FORM, FIT OR FUNCTION OF THE PART OR PRODUCT
PAGE 01	UNCLAMPED ANGLE DIMENSIONS
MATERIAL: NA	LENGTH DIMENSIONS: ± TOLERANCE
	From: 0.5 to 30: ± 0.1
	Over: 30 to 100: ± 0.2
	Over: 100 to 150: ± 0.3
	Over: 150 to 300: ± 0.5
	UNCLAMPED ANGLE DIMENSIONS

LIFECYCLE STATUS	Under Review
DRAWING NAME - DESCRIPTION	USER SPECIFICATION, REBA, 1529, TAPR
DRAWING NUMBER	98-4015-026-400
VERSION	A.3

CONFIDENTIAL - THIS DRAWING CONTAINS INFORMATION THAT IS PROPRIETARY TO SRAM CORPORATION AND MAY NOT BE DISCLOSED WITHOUT PERMISSION.